



STK<sup>®</sup> ATLANTA

---

# GROUP & PRIVATE DINING

---

*\*MENUS ARE SEASONAL, ITEMS & PRICING ARE SUBJECT TO CHANGE\**



STK Steakhouse artfully blends the modern steakhouse and a chic lounge into one, offering a dynamic, vibe dining experience with the superior quality of a traditional steakhouse. Located on the corner of Peachtree and 12<sup>TH</sup> Street in the 12<sup>TH</sup> & Midtown development, STK Atlanta distinguishes itself with a vibrant mix of stylish dining and lounge spaces paired with signature menus and world class service. Any event - large or small, decadent or relaxed - will be customized to suit your needs guaranteeing an event that your guests won't forget.

### HIGHLIGHTS

- Multiple full-service bars
- Advanced sound system and lighting with DJ set-up
- Complimentary high-speed WiFi access

### PRIVATE DINING

- CANDY BARR - seats up to 16 guests
- TEMPEST STORM - seats up to 22 guests
- CANDY BARR & TEMPEST STORM - seats up to 50 guests
- GILDA GRAY - seats up to 80 guests

### SEMI-PRIVATE DINING

- BISTRO & BAR - seats up to 60 guests
- MAIN DINING - seats up to 130 guests

### RESTAURANT HOURS

..... LUNCH .....	
MONDAY - FRIDAY	11:00AM - 3:00PM
..... DINNER .....	
SUNDAY - THURSDAY	3:00PM - 11:30PM
FRIDAY & SATURDAY	3:00PM - 12:30AM
..... BRUNCH .....	
SATURDAY & SUNDAY	10:00AM - 3:00PM

### CONTACT

EVENTSATL@TOGRP.COM | 833-STK-EVTS (833.785.3887)  
STKSTEAKHOUSE.COM | f@Xj @EATSTK

# STK ATLANTA DINING SPACES

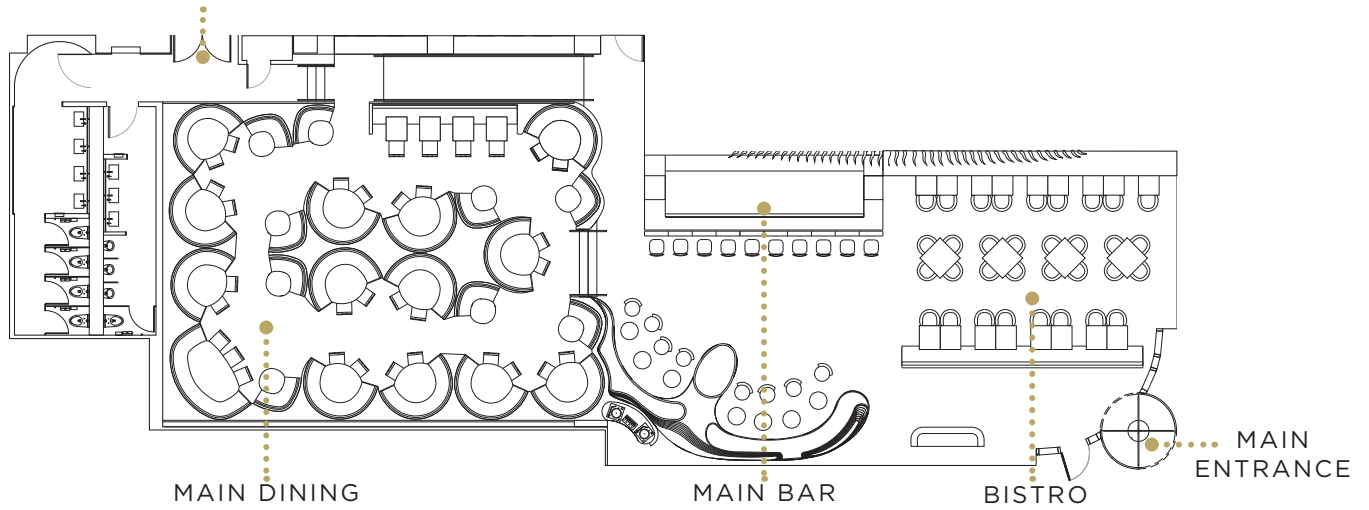


# Floorplan

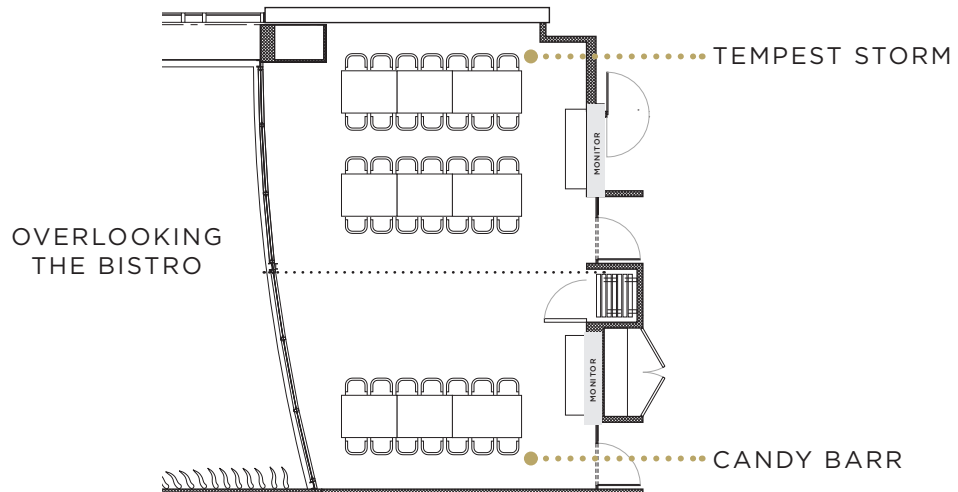
←..... 12<sup>TH</sup> STREET .....→

## FIRST FLOOR

ENTRANCE TO GILDA GRAY

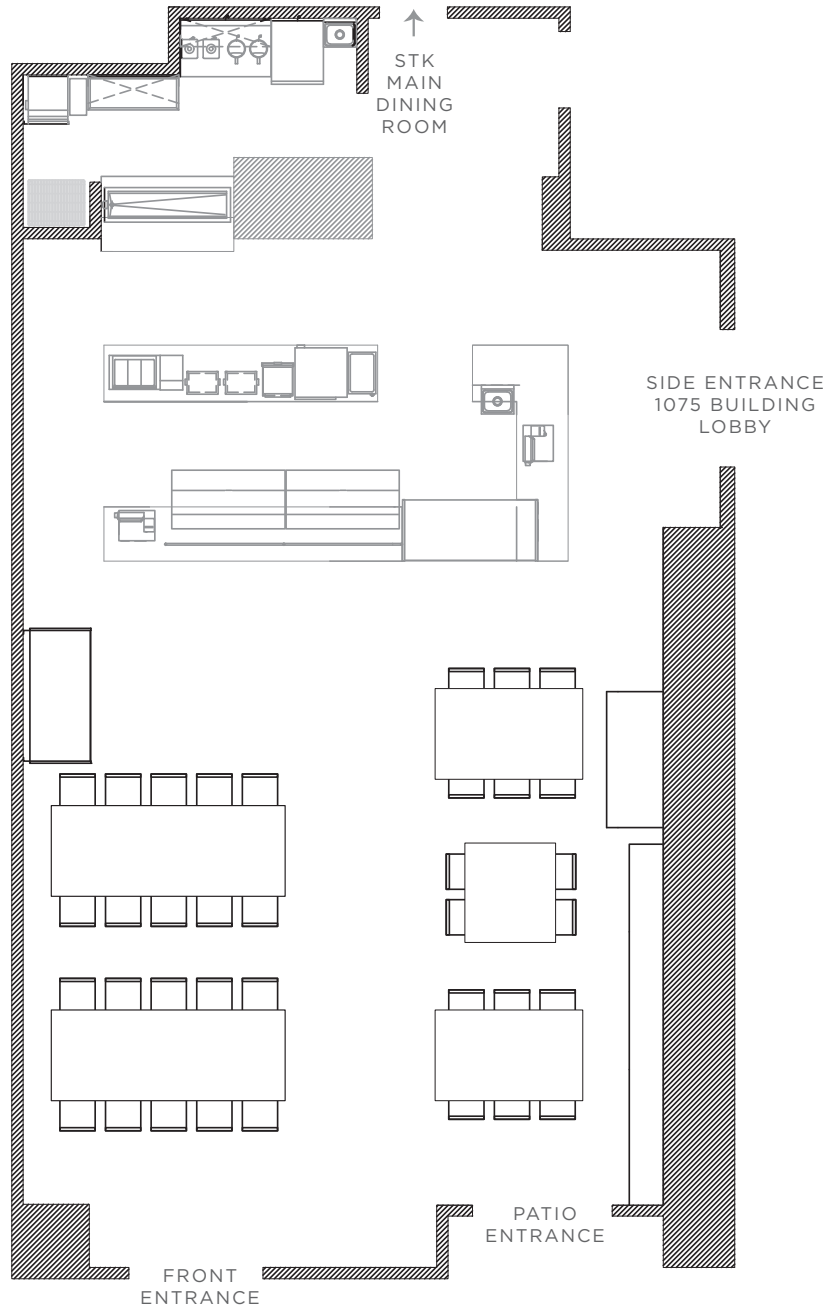


## SECOND FLOOR



# Floorplan

## GILDA GRAY EVENT SPACE - SETUP 1



..... PEACHTREE ST .....

# Floorplan

## GILDA GRAY EVENT SPACE - SETUP 2

